

NUTS AND BOLTS

A NEWS UPDATE FROM LEDWELL

Summer 2014

ROLLBACK vs. HYDRATAIL TRUCK



LENGTH	20' - 32'
WIDTH	102"
CAPACITY	20,000 - 30,000lbs
DECK	Steel over wood or Hardwood

ROLLBACK

The Ledwell Rollback is consistently reliable for your hauling needs. No matter the job, it provides the strength and durability to get it done. As an alternative to trailers, rollbacks provide ease of use and high levels of maneuverability in tight places. Hybrid, with front and rear cylinders, or gravity controlled beds are available.

HYDRATAIL TRUCK

The Ledwell Hydratail Truck provides another way to quickly and easily haul your equipment. The Hydratail Truck bed lies directly on the chassis frame, about five inches lower than the Ledwell Standard Rollback, therefore providing more of a height allowance. The tail is the same as our popular Hydratail Trailers, requiring less ground space to load. The Hydratail Truck has a 9' hydraulic tail with 5' fold-under.

INSIDE

page 2
FROM THE SHOP
Pump Room

page 3
INNOVATION
Diesel Exhaust Fuel Truck

page 4
EMPLOYEE SPOTLIGHT
Phil Bocox

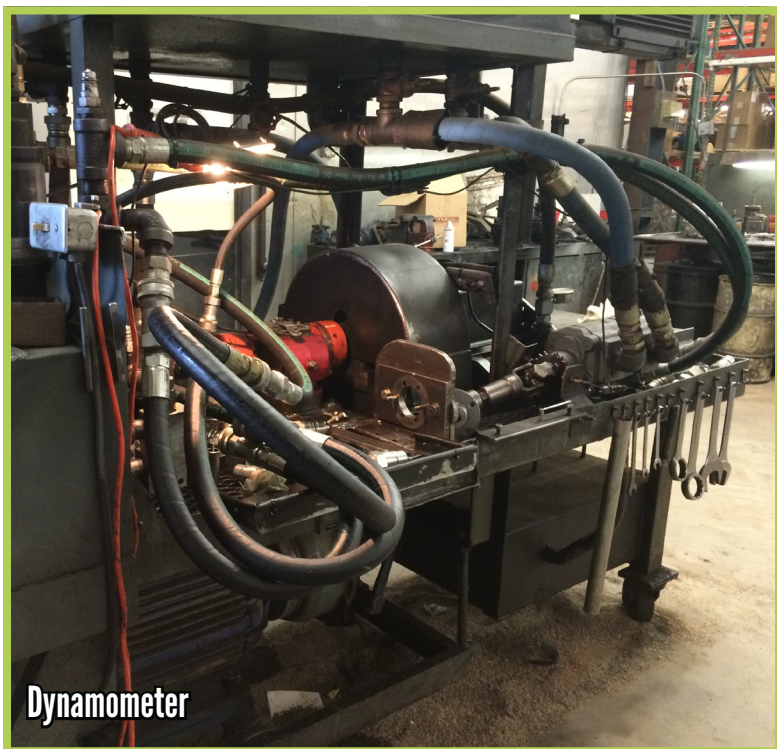
page 5
THE COMMUNITY WE SERVE
Fonar Upright MRI



FROM THE SHOP

Pump Room

Here at Ledwell, we have a full service hydraulic build and repair shop. We stock parts and components for a wide range of hydraulic pumps and motors, as well as, valves and control circuit devices. Our capabilities include teardown, inspection and repair to factory specifications. We also offer modification and assembly of new units from factory parts to meet design needs. All components are function tested on our dynamometer to insure that they will perform as required.



Along with hydraulics, we repair and assemble the mechanical power transmission components used on our feed delivery equipment. All of our stack control valves and torque connectors are assembled and tested in the pump room

Parts are manufactured in-house in our machine shop and then stocked and assembled in the pump room for use in production and aftermarket sales.

INNOVATION

Diesel Exhaust Fuel Truck

Ledwell recently added Diesel Exhaust Fluid or DEF Transport Tanks to our line of products. Under the 2010 emission rules and regulations, all diesel engines built have to be manufactured with a diesel exhaust fluid and a catalytic converter system to reduce emissions.



DEF is a solution of purified water and 32.5% automotive grade urea. Combined with the new exhaust system on today's diesel engines, it converts harmless exhaust into nitrogen and water vapor for clean exhaust. DEF is non-toxic, non-flammable, and will not harm people or the environment, if handled correctly.

DEF is extremely heavy, weighing in at 9.0 pounds per gallon. The Ledwell DEF truck has a 20,000 lb. front axle, a combined 46,000 lb. pound rear axle rating, and will legally haul 2,950 gallons of product.

Due to the fluid being extremely corrosive, the DEF Truck has a stainless tank and stainless internal systems, including pumps, filter system, and meters, along with all the plumbing in this application.

Custom applications are offered to fit your specific needs and product's capacity, with 2,950 gallons being the largest truck mounted system to date.



EMPLOYEE SPOTLIGHT

Phillip Bocox

Phillip Bocox has been with Ledwell for the past 35 years. He started his career at Ledwell as a purchasing agent. Since then, he has held several positions – Purchasing Director, Transportation Director, Parts Sales, Equipment Sales, Production Control, Multi-Media Advertising, and last but not least Corporate Wizard.

Phil has always enjoyed working various facets of the company. He has had the experience and pleasure to observe our company growing from a regional manufacturer employing around 50 employees, to a global supplier with well over 400 employees. Phil said, “I can’t explain how much I have learned and succeeded without mentioning my mentor,



L.W. “Buddy” Ledwell. He gave me opportunities that I don’t think I could have had in a conventional workplace environment. I have never seen anyone outsell him. His sales philosophy was founded on truth, customer appreciation, and honor. His leadership inspired every employee to do the best of their ability, therefore our products truly are a work of craftsmen.”

He feels blessed to have the opportunity to work with great people. Phil's associations with our customer base have been a treasure of friendships and accomplishments. He states he is proudest of his family; his wife of 43 years, three great sons, two wonderful daughters-in-law and four terrific grandchildren.



“Phil has spent the last 35 years at Ledwell, learning the needs of our customers and teaching his fellow employees how to take care of those needs, as well as, the company and themselves. He comes to work every morning early with a smile on his face and the desire to fulfill any task placed before him.” - Steve Ledwell

THE COMMUNITY WE SERVE

Fonar UPRIGHT® MRI

For the benefit of the Texarkana community, Ledwell is leasing a new UPRIGHT MRI machine to Advanced Imaging with all proceeds going to Watersprings Ranch, a Texarkana residential home for children.



Advanced Imaging Center's goal is to provide patients with the most comfortable and relaxing MRI exam experience available. The state of the art UPRIGHT Open MRI machine provides fast, high quality results. Claustrophobic and larger patients may find this unit especially beneficial. Not only do you have plenty of room in the new UPRIGHT Open MRI, but now you have the luxury of watching a movie on a big flat screen tv during your scan.

Compared to a static MRI that is scanned in one position while laying down, the UPRIGHT MRI scans in multiple positions, such as flexion (bending forward), extension (bending backward), lateral bending, or rotation. By allowing the pull of gravity to continue the pull on your skeletal system, you get a truer picture of your damaged area. This unit can also be used for scoliosis patients, as well as, all types of brain and neck scans.

For more information, please visit texarkanaimaging.com and watersprings.com.



RECENT HAPPENINGS

Ledwell Machinery Open House

On Thursday, February 27th, Ledwell Machinery held their 5th annual Open House. Representatives from Bobcat, Toro, Stihl and Maruyama were on hand to talk to customers about equipment. Over 400 people came out to the open house to shop and learn more about our products, when the local radio station dubbed our burgers "world famous." Our chefs, Cole and Mark, had a lot to live up to!



Lee Cecil and AJ Weible



Mica Morse and Lisa Ledwell



Cole Meador and Mark Van Herpen



Raffle prize table

PRODUCTS YOU COULD USE

Highlights From Our Inventory



CHASSIS
INVENTORY

Ford
F-550
F-650
F-750

Freightliner
M2106
114SD

International
4300
ProStar



Kenworth
T470

Peterbilt
337
348

USED INVENTORY



2012 Peterbilt 348 + Ledwell 16yd Box Dump



2012 Ledwell Fuel and Lube Body Only



2007 Ledwell 40' Aluminum Drag Chain Trailer



2009 IHC 4300 + NEW Ledwell 2000WT



3300 Waco Street
Texarkana, Texas 75501

CUSTOMER FEEDBACK

“[I] would like to personally thank each and every one of the good folks at Ledwell for building such a quality product. In today’s market, quality is everything and it shows from the kind and courteous office staff to the professional craftsmen in the shops that put their heart and soul into everything they do. It gives me great pleasure in knowing that I can always count on my good friends at Ledwell for all my equipment needs. Definitely a first class operation and our go-to Shop”

- Mark Talent, Brenntag Southwest